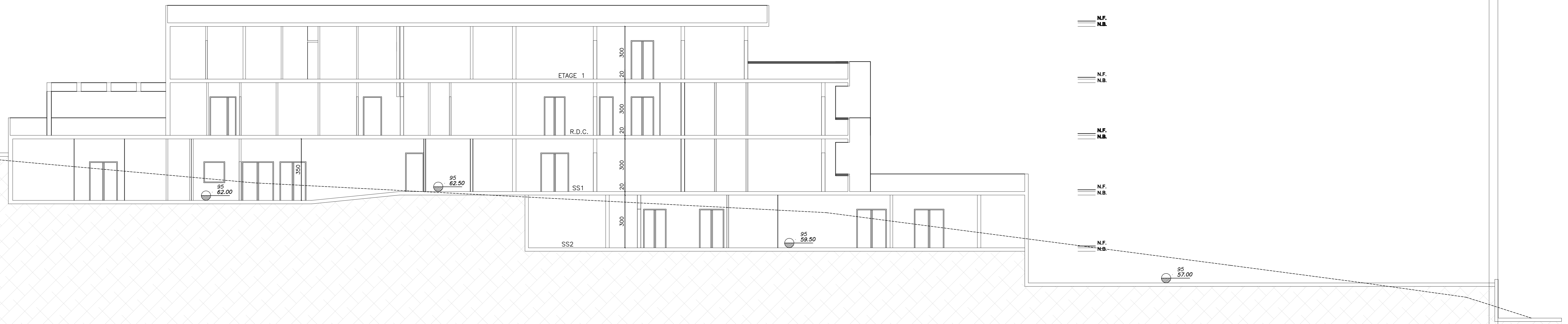


COUPE B-B



COUPE A-A

| REV | BY | APP | DESCRIPTION | DATE |
|-----|----|-----|-------------|------|
| -   | -  | -   | -           | -    |

*Revisions*

**PROJECT:**  
DAR EL INAYA HOSPITAL  
AIN EBEL-LEBANON

**CLIENT:**  
MARONITE ARCHDIOCESE  
OF TYR

**SHEET INFORMATION**

|                     |                                    |
|---------------------|------------------------------------|
| PROJECT PHASE       | FOR TENDER                         |
| DISCIPLINE          | ARCHITECTURAL WORKS                |
| ARCHITECT           | NADIM ABOU DID/JOSEPH MOUNA        |
| CIVIL ENGINEER      | IBRAHIM ABOU DID/CHARBEL RIZKALLAH |
| HEALTH PLANNER      | AKRAM KARAM                        |
| MECHANICAL ENGINEER | RABIO KHAYTALLAH                   |
| ELECTRICAL ENGINEER | RABIH HAJI                         |
| DESIGNED            | -                                  |
| CHECKED             | -                                  |
| APPROVED            | -                                  |
| DATE                | JULY 2008                          |
| SCALE               | 1/100                              |

**SECTIONS**

SHEET NUMBER **A16**

