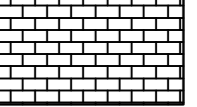


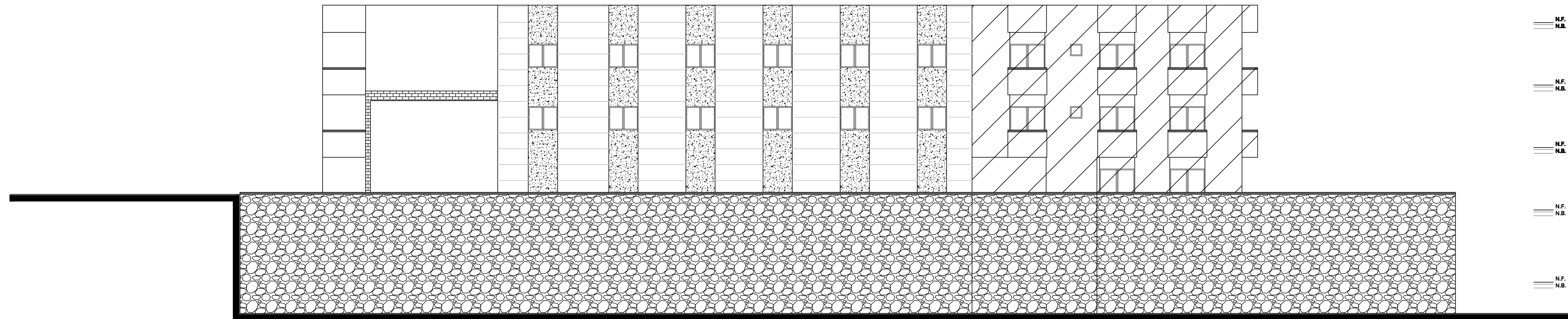
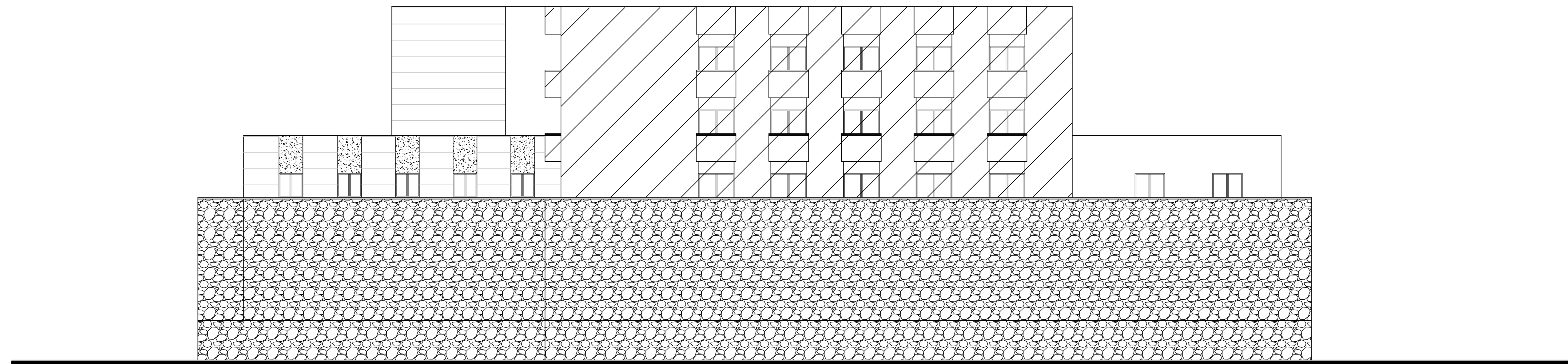


LEGENDE

	Revetement en Pierre
	Stucco
	Alucobond



FACADE EST



FACADE NORD

REV. BY	APP.	DESCRIPTION	DATE

Revisions

PROJECT:
DAR EL INAYA HOSPITAL
AIN EBEL-LEBANON

CLIENT:
MARONITE ARCHDIOCESE
OF TYR

SHEET INFORMATION

PROJECT PHASE	FOR TENDER
DISCIPLINE	ARCHITECTURAL WORKS
ARCHITECT	NADIM ABOU DID/JOSEPH MOUNA
CIVIL ENGINEER	IBRAHIM ABOU DID/CHARBEL RIZKALLAH
HEALTH PLANNER	AKRAM KIRAM
MECHANICAL ENGINEER	RABIO KHAYTALLAH
ELECTRICAL ENGINEER	RABIH HAJI
DESIGNED	-
CHECKED	-
APPROVED	-
DATE	JULY 2008
SCALE	1/100
SHEET TITLE	ELEVATIONS

SHEET NUMBER **A15**

