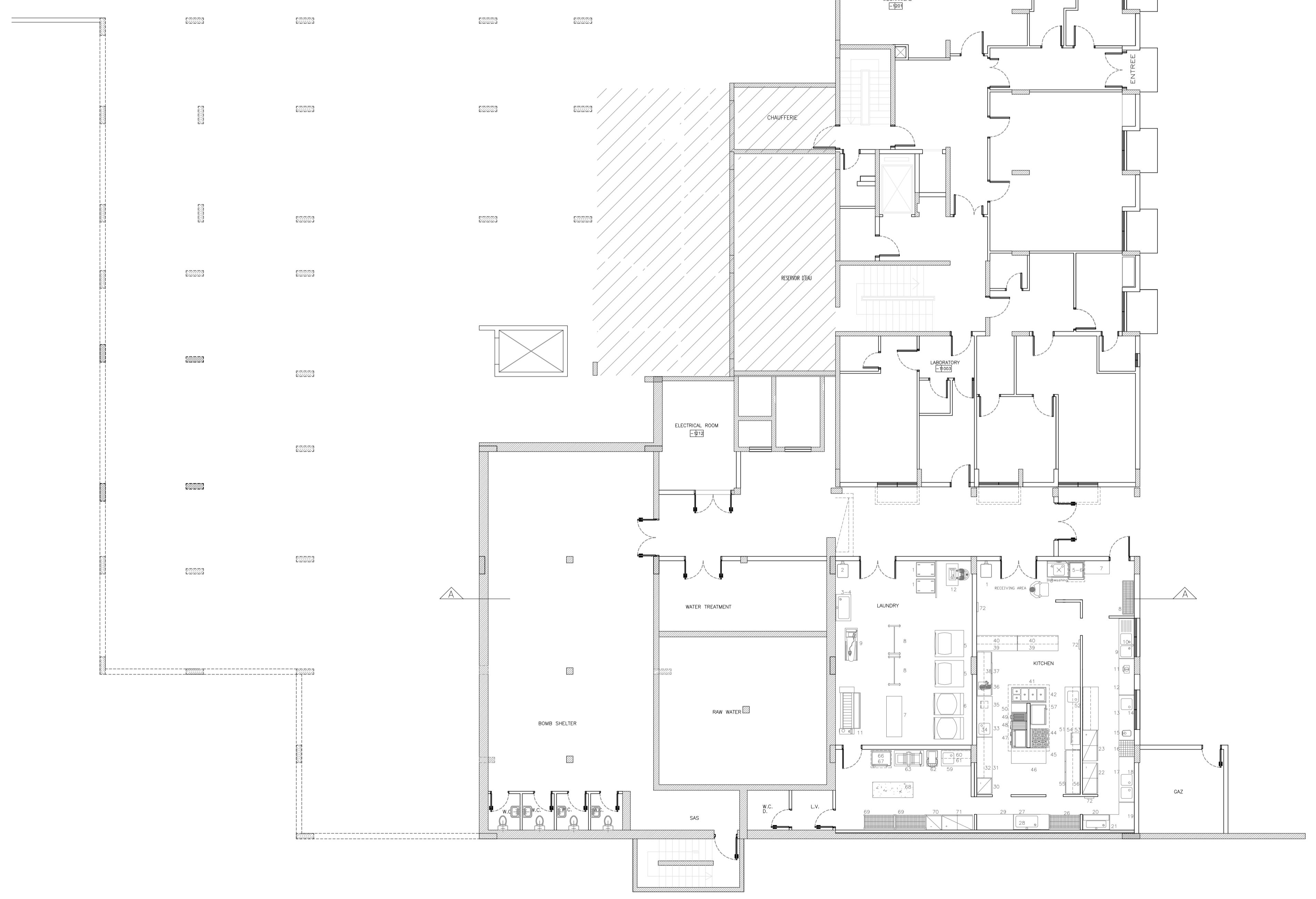


COUPE A-A



- ELECTRO-MECHANICAL**
- E1= 3 EEL AT 110 mm
 - E2= 3 LUP AT 110 mm
 - E3= 3 LUP AT 80 mm
 - E4= 3 LUP AT 80 mm
 - E5= 1 EEL AT 110 mm
 - E6= 1 EEL + 1 ANTENNA AT 2.8 m
 - E7= 1 EEL AT 110 mm
 - E8= 1 EEL AT 110 mm
 - E9= 3 PHASE LUP, 10 KW
 - E10= 3 PHASE LUP, 100 KW
 - E11= 3 PHASE LUP, 60 KW
 - E12= MED LIGHT OVER DOOR
 - E13= MED AND ORANGE LIGHT OVER DOOR WITH CONDUITE WITH CONTROL ROOM
 - E14= 3 PHASE 60 KW
 - E15= 1 EEL + 1 ANTENNA AT Ceiling
 - E16= 10 LUP, 4 EEL, 302, AIR 4 BAR, 2VAC
 - E17= 4 LUP, 2 EEL, 302, 2 VAC
 - E18= 4 LUP, 2 EEL, CE, AIR 4 BAR, NSD, VAC
 - OW= COLD WATER
 - HW= HOT WATER
 - BW= SOFT WATER 60 PPM
 - SBW= SOFT WATER 3 PPM
 - NO= REVERSE OSMOSIS AT 60 mm
 - S= STEAM
 - D1= 8mm FLOOR DRAIN
 - D2= 10mm WALL DRAIN AT 20 mm
 - D3= 10mm FLOOR DRAIN
 - D4= 10mm FLOOR DRAIN, POINT
 - D5= 8mm FLOOR CLOSE DRAIN
 - A= AIR 7 BAR
 - H= H2O2
 - M= GE, VAC, AIR 4 BAR
 - M2= 302, 2VAC, AIR 4 BAR, AIR 7 BAR, AIR 8 BAR, NSD
 - CP= 2 EEL, 2 LUP, 302, 2VAC, AIR 4 BAR, AIR 7 BAR, NSD, AIR MOTOR EVAC
 - PT= 2 EEL, 4 LUP, CE, VAC, AIR 4 BAR, AIR 7 BAR, AIR MOTOR EVAC
 - W= 1/2 SW, 1 HW, CE, CE
 - WB= SW SW, 1 HW, CE, 3 PHASE 60 KW
 - N= NETWORK CABLE BETWEEN CONTROL ROOMS
 - N1= NETWORK CABLE BETWEEN Control Room and Machine
 - N2= NETWORK CABLE BETWEEN ICU BED AND NURSE STATION
 - NS= Centralized Clock

REV	BY	APP	DESCRIPTION	DATE

PROJET:
HOPITAL EL INAYA
AIN EBEL-LIBAN

CLIENT:
ARCHEVECHE MARONITE
DE TYR

FN SOCIETE ABOU DIB
de CONSTRUCTION

ZAHLE - Boulevard - Fawzi Abou Dib Bldg - 2nd Floor
Tel: 961 08 804925 - 961 08 821685
Fax: 961 08 805985
E-mail: info@aboudib.com

INFORMATION

PHASE	EXECUTION
DICIPLINE	ARCHITECTURE
ARCHITECTE	NADIM ABOU DIB/JOSEPH MHANNA
CIVIL	IBRAHIM ABOU DIB/CHARBEL RIZKALLAH
HEALTH PLANNER	AKRAM KARAM
INGENIEUR MECANIQUE	RABIH AHYVALLAH
INGENIEUR ELECTRIQUE	RABIH HALI
DESSINE PAR	SLEIMAN ABOU DIB
CONTROLE PAR	
APPROUVE PAR	
DATE:	NOVEMBER 2010
ECHELLE:	1/100
TITRE	

SOUS-SOL

NUMERO DU PLAN: **A01**